

VIRTUAL SERIAL PORT EMULATOR SETTINGS - VSPE -

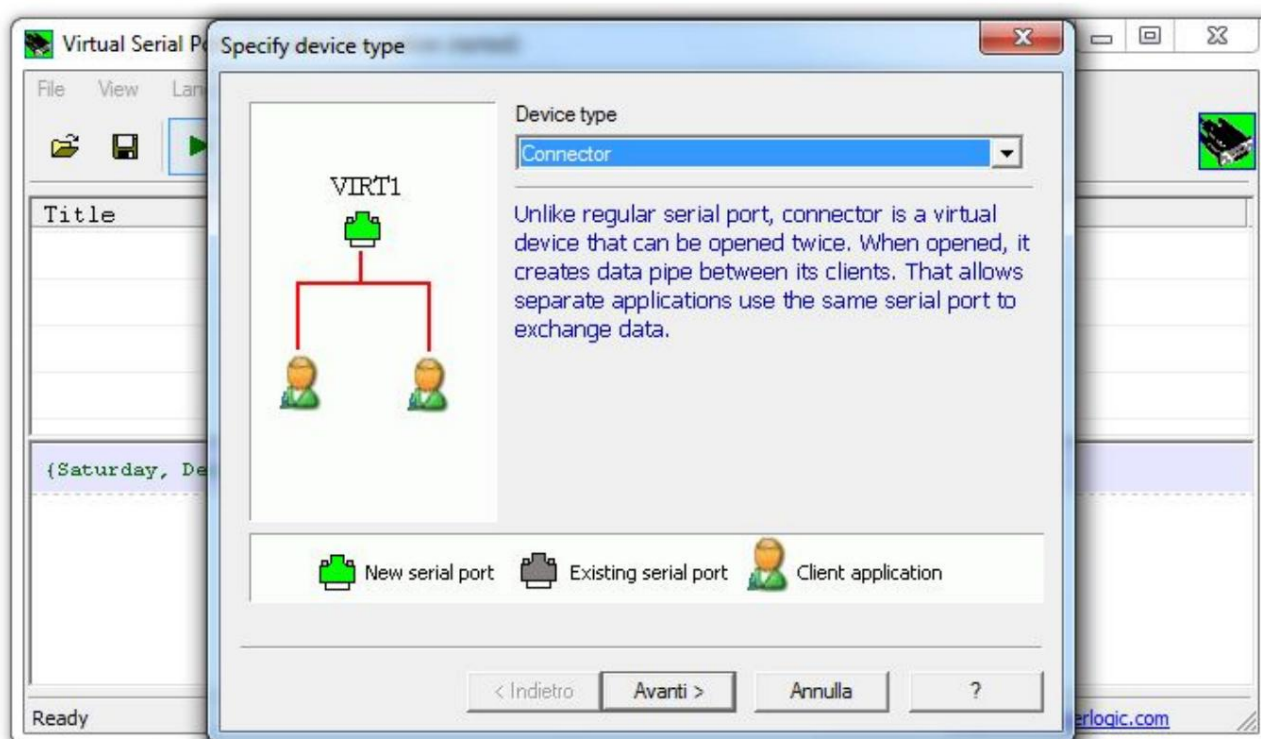
Written by IZOGIF - Mimmo

Virtual Serial Port Emulator is a very simple program that allows you to interface PowerSDR with other software without the need for physical serial cables. This is done by creating virtual serial ports. The free version of the program can be downloaded here: <http://www.eterlogic.com/Downloads.html>

Let's see how to configure virtual serial ports to interface FlexRadio devices with various third-party software or hardware.

1) Let's create a CONNECTOR.

Click on Device – Create, select Connector and click Next.



For example, let's select COM5.

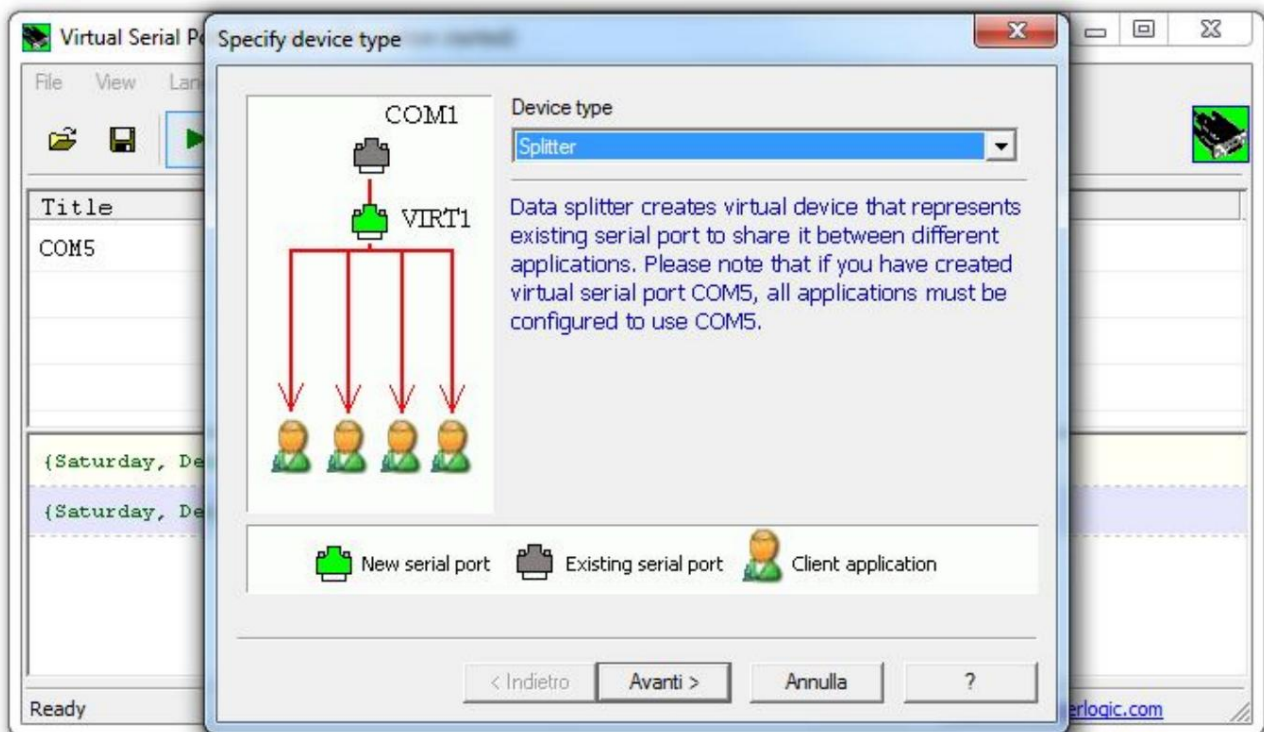
Click Finish to confirm.

We have created our own connector which will be interfaced to PowerSDR via Setup – CAT Control with 9600 8N1 settings.

To be able to use multiple applications that require CAT communication with PowerSDR at the same time, we need to split the serial signal into multiple paths, and the serial splitter will take care of this.

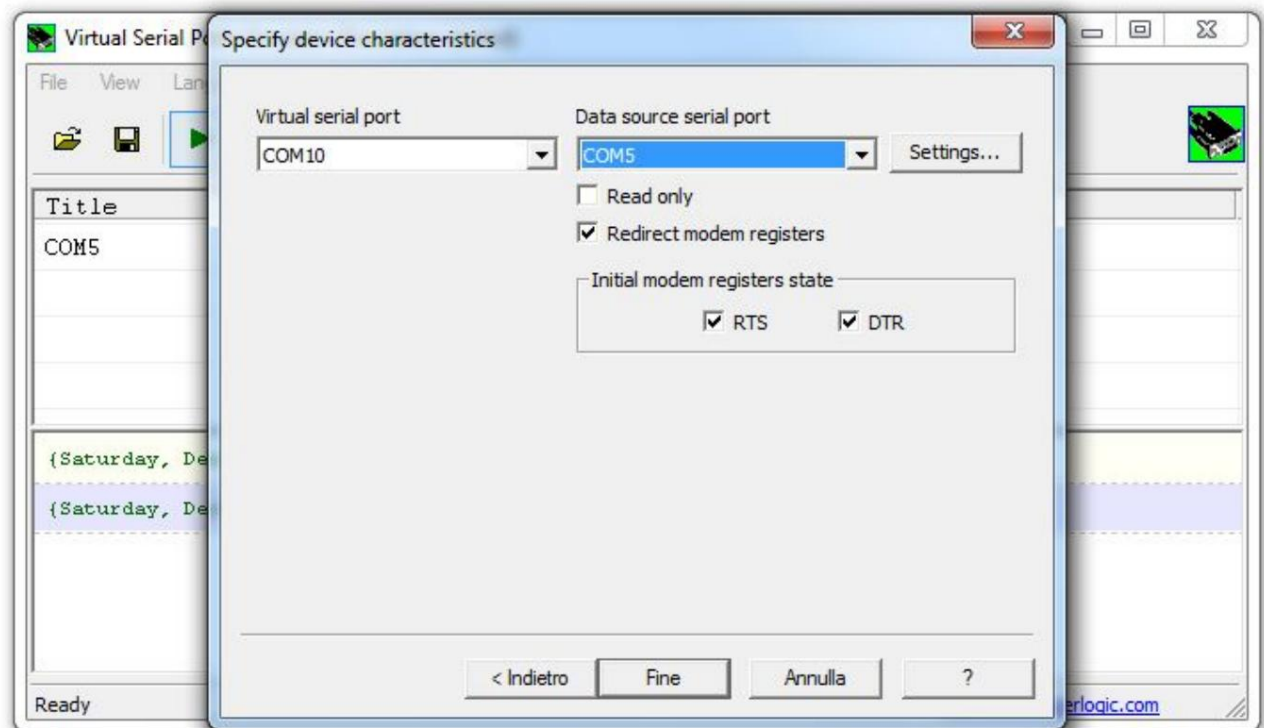
2) Let's create a SPLITTER.

Click on Device – Create and select Splitter and click Next.



In Virtual serial port we choose, for example, COM10 as the communication port for the outside.

In Data source serial port we select the COM5 created previously.



Click Finish to confirm.

Now we can simultaneously use multiple applications connected via CAT to PowerSDR using the COM10 port as a multiple communication port.

